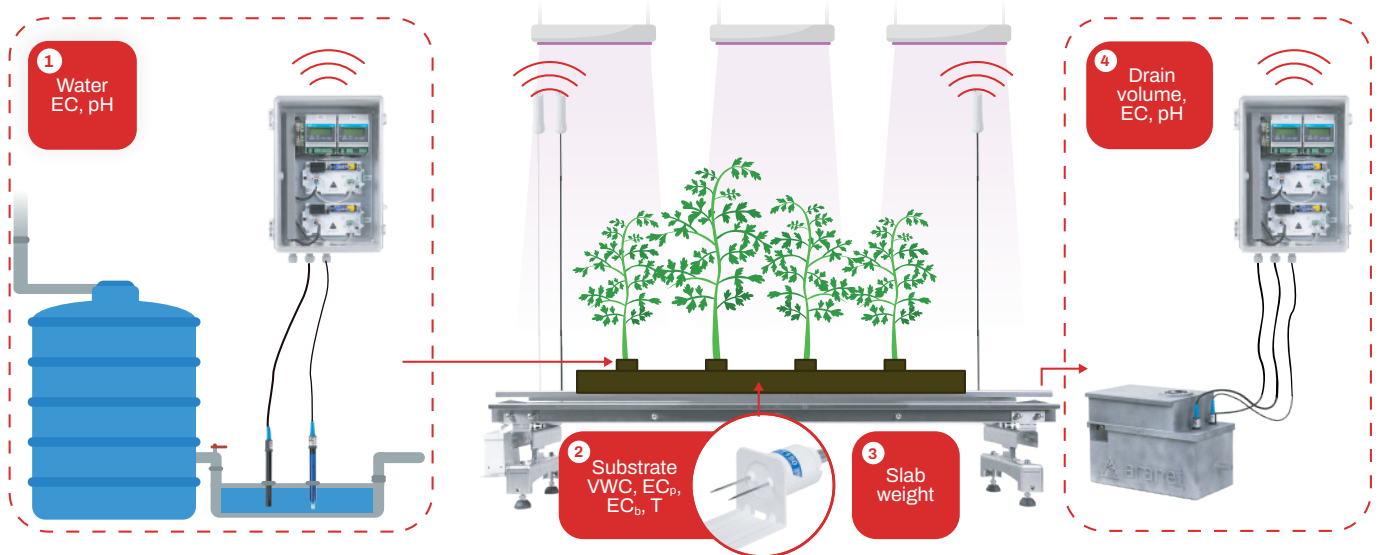


Precise Greenhouse Irrigation with Aranet

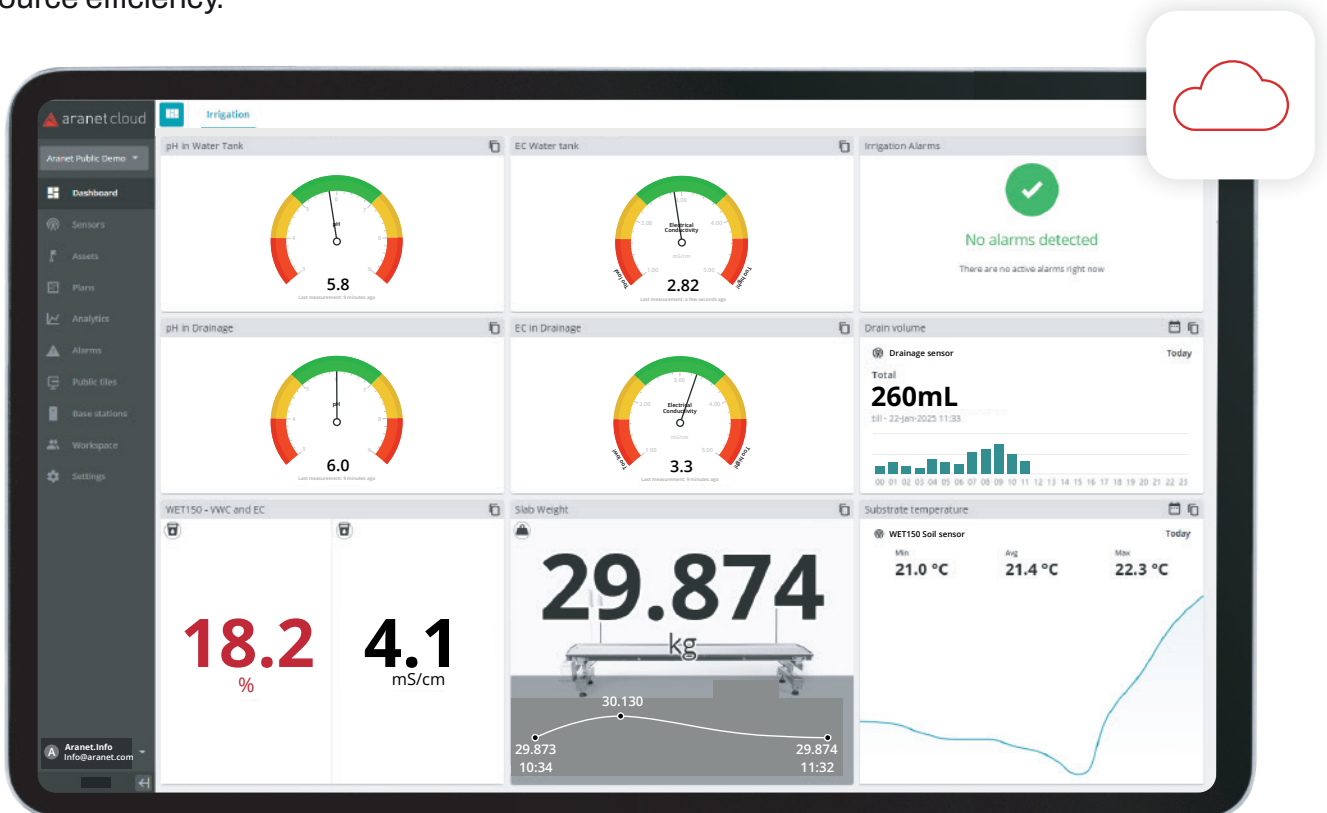


To make precise irrigation decisions—such as determining how much water to apply, when to irrigate, and what nutrient mix to use—reliable measurements are essential. Aranet's greenhouse irrigation monitoring solution combines Soil Sensor WET150, Slab Weight sensor, EC and pH sensor, and Horti Drainage sensor to support precise irrigation control and optimize plant health across fertigation, application, and drainage stages.

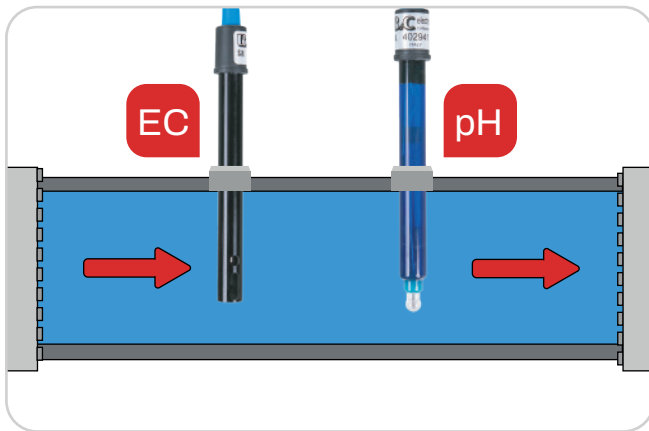


All your data on one platform

The **Aranet Cloud** platform allows users to track and analyze irrigation cycles and their effectiveness, enabling precise water and nutrient management, healthier plants, and improved resource efficiency.

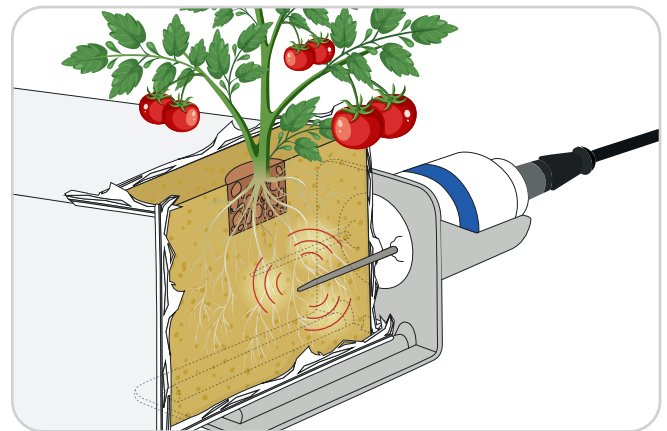


Wireless Sensors for Each Irrigation Stage



1. Fertigation - Nutrient Solution Preparation

The Aranet EC & pH sensors continuously monitor the acidity and nutrient levels in the fertigation mix, ensuring plants receive a balanced, crop-specific nutrient blend that prevents deficiencies and toxicities. These sensors enable growers to make swift adjustments to the solution, ensuring optimal conditions tailored to the plants' needs.



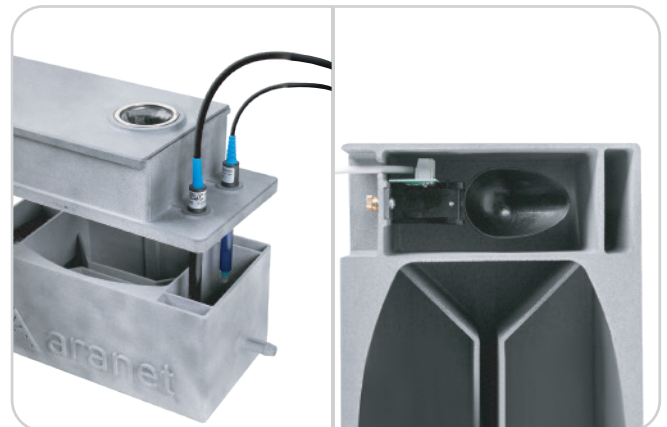
2. Irrigation Process

The Soil Sensor WET150 provides real-time data on volumetric water content (VWC), temperature, and bulk and pore electrical conductivity in the substrate. This allows for precise adjustments to irrigation schedules and volumes, reducing water waste and preventing overwatering or underwatering.



3. Tracking Slab Weight

The Slab Weight Sensor measures the total weight of the slab, tracking changes caused by irrigation, plant uptake, and evaporation. It offers valuable insights into the overall water balance, enabling growers to optimize irrigation cycles effectively.



4. Drainage Monitoring

Monitor key drainage parameters with the Aranet EC & pH sensor by measuring pH and nutrient concentration. Additionally, use the Horti Drainage sensor to track runoff volume. The Horti Drainage sensor also ensures proper placement of the EC & pH sensor probes, simplifying installation.